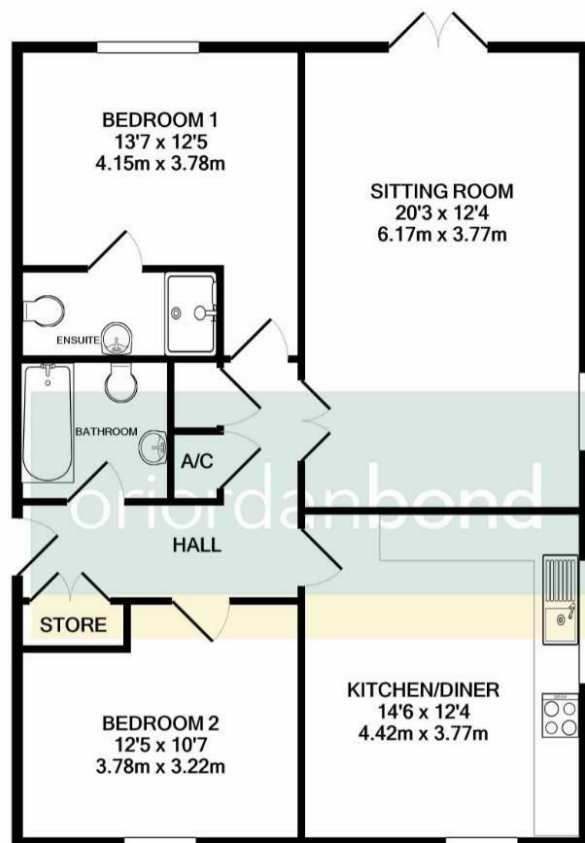




82 Baines Way

Grange Park, Northampton

oriordanbond



TOTAL APPROX. FLOOR AREA 861 SQ.FT. (80.0 SQ.M.)

Whilst every attempt has been made to ensure the accuracy of the floor plan contained here, measurements of doors, windows, rooms and any other items are approximate and no responsibility is taken for any error, omission, or mis-statement. This plan is for illustrative purposes only and should be used as such by any prospective purchaser. The services, systems and appliances shown have not been tested and no guarantee as to their operability or efficiency can be given
Made with Metropix ©2021

82 Baines Way

Grange Park

Northampton NN4 5DP

OFFERS OVER £190,000

A modern two bedroom top floor apartment, located within the popular Grange Park estate, close to local amenities and the popular Foxfield Country Park. The apartment is offered for sale with no onward chain.

Accommodation comprises secure communal entry, entrance hall, dual aspect sitting room, kitchen/dining room, master bedroom with en-suite, guest double bedroom and a bathroom. Benefits include uPVC double glazing, gas radiator heating and allocated parking. (B/861/-)

Leasehold Information; Lease length TBC / Service Charge £TBC / Ground Rent £TBC

Additional information

- Council Tax Band: C
- Energy Efficiency Rating: C

Viewing

Viewing strictly by appointment – details below

Disclaimer

O'Riordan Bond Estate Agents Limited has not tested apparatus, equipment, fittings or services and so cannot verify they are in working order. The buyer is advised to obtain verification from their solicitor or surveyor.

O'Riordan Bond Grange Park Sales

01604 432007

grangepark@oriordanbond.co.uk